

**InteXēn® LP™**

**AMS Systems with InteXēn LP Porcine Dermal Matrix**

InteXēn LP is also available in a variety of sizes optimized for suburethral slings and other urological and gynecological applications.

InteXēn LP Porcine Dermal Matrix is one of the many InteGraft Reconstruction Materials available through AMS.

**Ordering Information**

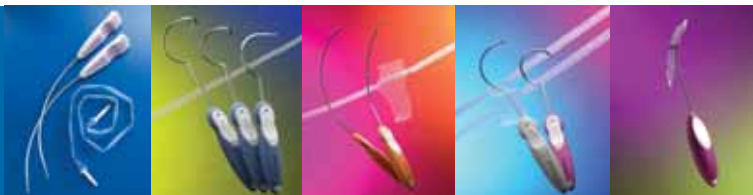
Description	Order Number
Apogee System with IntePro Lite™ - synthetic	720002-02
Apogee System with InteXēn® LP™ - biologic	72404089
Perigee System with IntePro Lite™ - synthetic	720003-02
Perigee System with InteXēn® LP™ - biologic	72404088
InteXēn® LP™ Porcine Dermal Matrix - 2 x 7 cm	72404062
InteXēn® LP™ Porcine Dermal Matrix - 2 x 16 cm	72404067
InteXēn® LP™ Porcine Dermal Matrix - 4 x 7 cm	72404063
InteXēn® LP™ Porcine Dermal Matrix - 6 x 8 cm	72404064
InteXēn® LP™ Porcine Dermal Matrix - 8 x 12 cm	72404066

**Summary of Warnings, Precautions and Contraindications for the InteXēn Porcine Dermal Matrix**

For a list of contraindications, warnings and precautions regarding this product, refer to the Instructions for Use or contact your AMS representative. This document is written for professional medical audiences. Contact your AMS representative for lay publications. American Medical Systems, Inc. periodically updates product literature. If you have questions regarding the currency of this information, please contact American Medical Systems.

**SOLUTIONS FOR LIFE®** American Medical Systems is a world leader in medical devices and procedures that treat: incontinence, prolapse, excessive menstrual bleeding, erectile dysfunction (ED) and benign prostatic hyperplasia (BPH). Any one of these conditions can profoundly diminish a patient's quality of life and significantly impact relationships. Our products provide a cure or reduce the incapacitating effects of these diseases, often through minimally invasive surgery.

**AMS Women's Health Solutions**



SPARC® Sling System

Monarc® Subfascial Hammock

Apogee® Vaginal Vault Prolapse Repair System

Perigee® Transobuturator Anterior Prolapse Repair System

MiniArc™ Single-Incision Sling System



**American Medical Systems, Inc.**  
**World Headquarters**  
 10700 Bren Road West  
 Minnetonka, MN 55343  
 USA  
 Phone: 952 930 6000  
 Fax: 952 930 6157  
 www.AmericanMedicalSystems.com

**American Medical Systems Europe B.V.**  
 Straatweg 66H  
 3621 BR Breukelen  
 THE NETHERLANDS  
 Phone: 31 346 258 100  
 Fax: 31 346 258 130

**American Medical Systems UK Ltd**  
 Capital Court  
 Capital Interchange Way  
 Brentford  
 TW8 0EX  
 United Kingdom  
 Tel: 44 (0) 20 8996 3100  
 Fax: 44 (0) 20 8995 3720

LYOPHILIZED PORCINE DERMIS DESIGNED  
TO MAINTAIN GRAFT INTEGRITY AND  
FACILITATE TISSUE INTEGRATION



InteXēn<sup>®</sup> LP<sup>™</sup>

Porcine Dermis

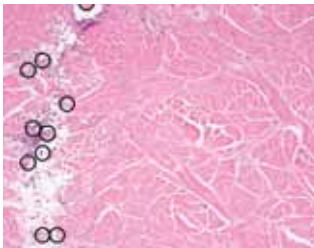


InteXēn LP is a non-chemically crosslinked porcine dermis that provides a unique biologic option in the treatment of male and female pelvic reconstructive procedures.

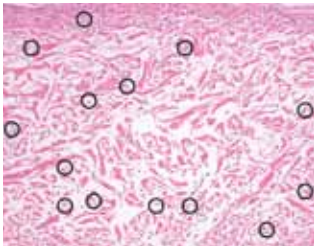
### Promoting Faster Healing than Crosslinked Porcine Dermis

InteXēn LP is a soft, pliable biomaterial that conforms to patient anatomy. Animal studies suggest that InteXēn LP maintains graft integrity and provides improved angiogenesis that may promote faster healing than other chemically crosslinked porcine dermis.\*

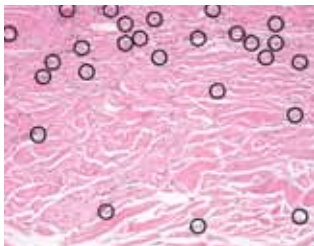
*Blood vessels circled to enhance identification. Histology slides taken from subcutaneous rat model. 12 week implants, 100x original magnification.*



Bard Pelvisoft™  
*Collagen integrity, but minimal cellular infiltration only through perforations.*



InteXēn®  
*Good cellular infiltration.*

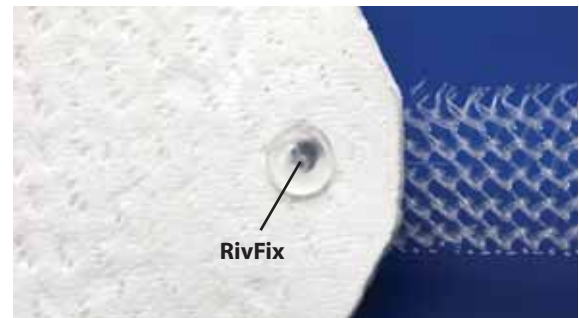


InteXēn® LP™  
*Excellent collagen integrity and cellular infiltration.*

### Lyophilized and Non-chemically Crosslinked for Performance, Pre-connected for Convenience

InteXēn LP is lyophilized (freeze-dried) for easier shipping, storage and handling. RivFix™ technology pre-attaches the biologic graft to the polypropylene mesh arms in the BioArc®, Apogee® and Perigee® kits, eliminating pre-procedure suturing steps.

A proprietary manufacturing process maintains better in vivo collagen integrity than first generation InteXēn\*.



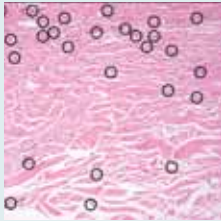
### Improved Early Vascularization

A non-chemically crosslinked porcine dermis, InteXēn LP is designed to promote early vascularization and improved early cellular infiltration.

\* Animal study data on file at AMS.

## AND REBUILDING WITH A BIOLOGIC GRAFT

### InteXēn LP



**Non-chemically crosslinked porcine dermis**

**Soft, pliable biomaterial**



**Proprietary manufacturing process and ETO sterilization**



**Pre-connected with RivFix technology**

### Providing

#### PATIENT

- A naturally occurring, biocompatible option that is designed to promote the collagen rebuilding and cellular remodeling process

#### PHYSICIAN

- Expands ability to accommodate individual patient needs

#### PATIENT

- Designed to potentially reduce risk of erosion, extrusion or unnatural hardening of tissue

#### PHYSICIAN

- Conforms to patient anatomy, exhibits excellent handling characteristics\*

#### PATIENT

- Designed to maintain collagen integrity in vivo\*

#### PHYSICIAN

- Allows for easier shipping, storage and handling due to lyophilization

#### PATIENT

- RivFix shortens procedure time

#### PHYSICIAN

- Achieves secure, standardized fixation

\* Data on file at AMS.

## Processed for Confidence and Biocompatibility

InteXēn LP is harvested from animals raised in the United States at USDA-regulated facilities. Processed according to ISO 9001 standards, InteXēn LP meets FDA and ISO biocompatibility requirements, including:

- Cytotoxicity
- Pyrogenicity
- Acute systemic toxicity
- Implantation/subchronic toxicity
- Sensitization
- Intracutaneous reactivity testing

Availability and size options make InteXēn LP appropriate for pelvic floor reconstruction, including:

- Pubovaginal slings
- Cystocele
- Suburethral slings
- Rectocele
- Enterocele
- Vaginal vault suspension